

# Nvee Plus



User Manual

## Safety advice

This product is not recommended for use by:

- Young people under the age of 18 years
- Non-smokers
- Pregnant or breastfeeding women
- Persons with general ill health such as high blood pressure, cardiovascular conditions, diabetes, asthma, lung disease, hyperthyroidism, liver or kidney problems, stomach or intestinal ulcers or tumours of the adrenal glands
- Persons who have a sensitivity/allergy to nicotine or any of the other e-liquid ingredients.

## Possible adverse effects

Immediately stop use of this product and seek medical advice if you experience any of the following:

- Feeling faint
- Nausea or vomiting
- Headache
- Dizziness
- Stomach discomfort
- Coughing or irritation to the mouth/throat
- Nasal congestion
- Chest palpitations/development of an irregular heartbeat
- Allergic reaction such as rash, itching or swelling
- Any other unusual or adverse effect.

If medical advice is needed, have product container and label to hand.

## Caution

Do not swallow any e-liquid substances.

Nicotine is a toxic substance when inhaled, ingested or in contact with skin. If contact with skin is made, wash immediately.

Nicotine warning applies when the product is used as designed and filled with nicotine-containing e-liquid. Keep out of reach of children.

Please dispose of this product responsibly by following your local authority electronic waste disposal guidelines. Using with incompatible parts, e-liquids and accessories may cause overheating and/or injury.

## Looking after your device

Store in a cool, dry place.  
Do not leave, charge or store the device in damp environments, in direct sunlight or in extreme temperatures. Never submerge any of the kit in water or any other liquid. Do not use the device when temperatures are outside the range -10-60°C or 50-140°F.  
Do not attempt to repair the product yourself as damage or personal injury may occur.  
Do not use this product or its parts for any purpose other than vaping.  
Do not use parts that are damaged or cracked.  
Do not use with incompatible parts, e-liquids or accessories; this can affect product performance and safety.  
Avoid carrying in pockets or bags with other metal objects such as keys and coins.  
Don't place the battery near flammable items such as carpets, curtains, etc., whilst charging.  
Don't leave device on charge overnight or un-attended whilst charging.  
If the device becomes hot or emits a strange smell during charging, remove it from charge immediately and do not attempt to use it again.

## Some useful tips

Ready for use with e-liquids of approximately 50vg/50pg. Each time you replace the coil, you should vape a few times to ensure the coil is conditioned and the e-liquid flavour comes through.

## First time use

Please ensure you locate the coil and screw it into the mod before use. See instructions for how to remove the tank to do this.

Also compatible with same coil of different resistances for either sub ohm or mouth to lung vaping, ideal for new users or experienced vapers.

## Specification

1500mAh	1.6Ω Kanthal coil
122.0*19.0mm	25W (Max)
2.0ml (Max)	Black
Top side filling	Bottom airflow



## How to use your kit

### Power On/Off

Press Fire button 5 times in 2 seconds. The device light will flash white and red alternatively when it is switched on/off.

### Vaping

Open the airflow controller, adjusting to your preference.

Press and hold the Fire button to vape.

Close the airflow controller and press the Fire button 5 times in 2 seconds when not vaping. Close the airflow controller when not in use.

### Charging the kit

The device light will flash red when it needs to be charged. When fully charged, the light will switch off. Remove the device from the charger cable to use your vape kit.



Plug the USB cable into a power supply and into the USB port to charge.

## How to change the coil



Remove the tank from the mod by screwing it anticlockwise.



Remove the used coil by rotating it anticlockwise and replace with a new coil.



Screw the tank back onto the mod secure enough to avoid e-liquid leaks.

The coils should be changed regularly in line with frequency of use or if you notice a deterioration in taste/quality of the vapour from your device. The coil is designed for use with 50pg/50vg e-liquids.

## How to fill with e-liquid



Rotate the top cap anticlockwise until you see the side hole opening.



Carefully pour e-liquid into the hole to ensure tank is almost full.

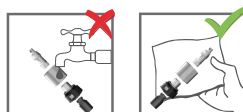


Close the top cap by rotating it clockwise until you see the 'N' logo to indicate the side hole is closed.



Tank opening width.

## Cleaning the kit



Updated November 2019

# Nvee Plus

nvee.co.uk

For all product queries and any returns, please call Customer Services on +44 (0) 1827 307777.

Distributed by  
Galaxy Connect Ltd. Unit 7 Apollo Park,  
Apollo, Lichfield Road Ind. Est.  
Tamworth B79 7TA



Designed by Vaptio  
Made in China