

# Nvee Pod



## Premium Vape Pod User Manual

### Safety advice

This product is not recommended for use by:

- Young people under the age of 18 years
- Non-smokers
- Pregnant or breastfeeding women
- Persons with general ill health such as high blood pressure, cardiovascular conditions, diabetes, asthma, lung disease, hyperthyroidism, liver or kidney problems, stomach or intestinal ulcers or tumours of the adrenal glands
- Persons who have a sensitivity/allergy to nicotine or any of the other e-liquid ingredients.

### Possible adverse effects

Immediately stop use of this product and seek medical advice if you experience any of the following:

- Feeling faint
- Nausea/vomiting
- Headache
- Dizziness
- Stomach discomfort
- Coughing or irritation to the mouth/throat
- Nasal congestion
- Chest palpitations/development of an irregular heartbeat
- Allergic reaction such as rash, itching or swelling
- Any other unusual or adverse effect.

If medical advice is needed, have product container and label to hand.

### Caution

Do not swallow any e-liquid substances. Nicotine is a toxic substance when inhaled, ingested or in contact with skin. If contact with skin is made, wash immediately. Nicotine warning applies when the product is used as designed and filled with nicotine-containing e-liquid. Keep out of reach of children. Please dispose of this product responsibly by following your local authority electronic waste disposal guidelines. Using with incompatible parts, e-liquids and accessories may cause overheating and/or injury.

### Looking after your device

Store in a cool, dry place. Do not leave, charge or store the device in damp environments, in direct sunlight or in extreme temperatures. Never submerge any of the kit in water or any other liquid. Do not use the device when temperatures are outside the range -10-60 °C or 50-140 °F. Do not attempt to repair the product yourself as damage or personal injury may occur. Do not use this product or its parts for any purpose other than vaping. Avoid using any parts that are damaged or cracked. Do not use with incompatible parts, e-liquids or accessories; this can affect product performance and safety. Avoid carrying in pockets or bags with other metal objects such as keys and coins. Avoid placing the battery near flammable items such as carpets, curtains, etc., whilst charging. Do not leave your device unattended whilst charging and avoid leaving on charge overnight. If the device becomes very hot or emits a strange smell during charging, remove it from charge immediately and do not attempt to use it again.

### First time use

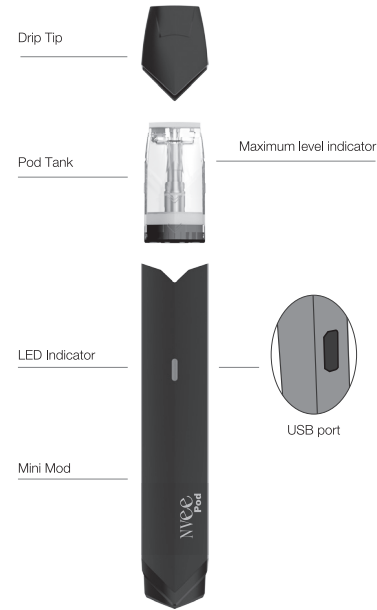
Remove the drip tip rubber cover. Remove the orange sticker on the base of the pod tank.

### Some useful tips

For use with e-liquids of approximately 50vg/50pg. The pod tanks are refillable, you should change the pod tank after approximately 10 complete refills depending on e-liquid type. Each time you replace the pod tank, you will need to vape a few times to ensure the coil is conditioned and the e-liquid flavour comes through.

### Specification

260mAh	1.5±0.2Ω
113.0*18.0*10.0mm	12W (Max.)
1.0ml (Max)	Black



### How to use your Vape Pod

#### To vape

- When you correctly connect the mini mod to the pod tank, the LED light will flash red twice.
- The device is ready to use (as long as it has battery power and contains e-liquid), simply vape through the drip tip.
- The LED light will turn green whilst vaping.
- When the Vape Pod needs to be charged, the LED light will then turn red during vaping.



#### To charge

- To charge, plug the USB cable into a power supply and into the USB port.
- Whilst charging, the LED light will flash red 3 times once connected and will remain on.
- It should take approximately 40 minutes to completely charge.
- The LED light will turn off when fully charged.

### Protection



**Short Circuit Protection**

LED light will flash red 3 times before you are unable to vape.



**Low Voltage Protection**

LED light will flash red 3 times before you are unable to vape.

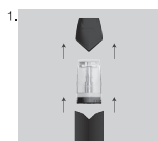


**Over Vaping Protection**

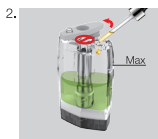
LED light will flash red 5 times before you are unable to vape.

Protection provided by the product may be impaired if not used in the manner specified by the manufacturer.

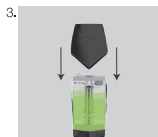
### How to change and fill the pod tank



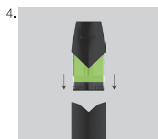
Remove the mini mod from the pod tank, and the drip tip from the pod tank. If you are changing the pod tank, use a new pod tank for steps 2 - 4.



To fill with e-liquid, move aside the pod tank's rubber cover, carefully pour e-liquid into the hole at the side of the tank, avoiding the centre. Fill to maximum level. Use the mini nozzle for e-liquid bottles that are too wide for the pod tank.



Replace the rubber cover and the drip tip onto the pod tank.

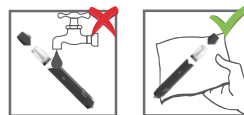


Place the drip tip with the pod tank back onto the mini mod. The LED light will flash red twice to let you know it's correctly connected and ready for use.



Tank opening width.

### Cleaning the device



# Nvee Pod

nvee.co.uk

For all product queries and any returns, please call Customer Services on 0800 731 1178 for assistance.

Distributed by  
Galaxy Connect Ltd. Unit 7 Apollo Park,  
Apollo, Lichfield Road Ind. Est.  
Tamworth B79 7TA



Designed by Vapto  
Made in China