

Nvee



Vaporiser User Manual

Safety advice

This product is not recommended for use by:

- Young people under the age of 18 years
- Non-smokers
- Pregnant or breastfeeding women
- Persons with general ill health such as high blood pressure, cardiovascular conditions, diabetes, asthma, lung disease, hyperthyroidism, liver or kidney problems, stomach or intestinal ulcers or tumours of the adrenal glands
- Persons who have a sensitivity/allergy to nicotine or any of the other e-liquid ingredients.

Possible adverse effects

Immediately stop use of this product and seek medical advice if you experience any of the following:

- Feeling faint
- Nausea/vomiting
- Headache
- Dizziness
- Stomach discomfort
- Coughing or irritation to the mouth/throat
- Nasal congestion
- Chest palpitations/development of an irregular heartbeat
- Allergic reaction such as rash, itching or swelling
- Any other unusual or adverse effect.

If medical advice is needed, have product container and label to hand.

Caution

Do not swallow any e-liquid substances.

Nicotine is a toxic substance when inhaled, ingested or in contact with skin. If contact with skin is made, wash immediately.

Nicotine warning applies when the product is used as designed and filled with nicotine-containing e-liquid. Keep out of reach of children.

Please dispose of this product responsibly by following your local authority electronic waste disposal guidelines.

Looking after your Vaporiser

Store in a cool, dry place.

Do not leave, charge or store the device in damp environments, in direct sunlight or in extreme temperatures. Never submerge any of the parts in water or any other liquid. Do not use the device when temperatures are outside the range -10-60 C or 50-140 F.

Do not attempt to repair the product yourself as damage or personal injury may occur.

Do not use this product or its parts for any purpose other than vaping.

Avoid using any parts that are damaged or cracked.

Do not use with incompatible parts, e-liquids or accessories.

Avoid carrying in pockets or bags with other metal objects such as keys and coins.

Avoid placing the battery near flammable items such as carpets, curtains, etc., whilst charging.

Do not leave the battery unattended whilst charging and avoid leaving on charge overnight.

If the vaporiser becomes very hot or emits a strange smell during charging, remove it from charge immediately and do not attempt to use it again.

Do not allow the clearomiser to run dry before refilling with e-liquid. It is advisable to keep at least 0.6ml of liquid in the clearomiser at all times.

At regular intervals, gently blow into the clearomiser to remove any residual e-liquid.

You should replace the clearomiser every 4 weeks to ensure the best vaping experience.

Pressing the LED button too often while inhaling could damage the product.

To avoid over heating, do not push the LED button for longer than 5 seconds at a time.

Specification

BATTERY

 650mAh Li-ion battery (black)

CLEAROMISER

 1.6ml  Tip diameter: 5mm



How to use your Vaporiser

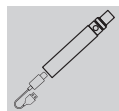
Power On/Off

Press LED button 5 times in 2 seconds.

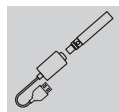
Vaping

Press and hold the LED button until it turns blue. Ensure you release the button when you are not vaping.

Charging the vaporiser



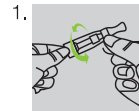
If you have a battery with the micro USB port at the bottom, connect it to the micro USB lead and a power supply to charge. The LED light will flash 3 times when connected and stay on whilst charging. When charging is complete, the light will flash and turn off automatically.



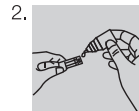
If you have the battery that needs to be connected with a USB charging device, screw the battery into the port. The light on the USB charger device will turn red when connected and charging. When charging is complete, the light on the USB charging device will turn green.

Recharging will take approximately 2 hours.

How to change the clearomiser and fill it with e-liquid



1. To change the clearomiser, turn it anticlockwise to unscrew it from the battery. Screw the replacement clearomiser onto the battery by turning it clockwise.

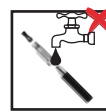


2. To fill, unscrew the cap off the clearomiser by turning it anticlockwise. Pour the e-liquid into the clearomiser, avoiding the central airway.



3. Screw the cap back on clockwise to vape. It is advisable that you replace your clearomiser with a new one when changing between e-liquid flavours unless you wish to mix them.

Cleaning the Vaporiser



Nvee
nvee.co.uk

Distributed by
Galaxy Connect Ltd., Unit 7 Apollo Park,
Apollo, Lichfield Road Ind. Est.
Tamworth B79 7TA

For all product queries and any returns,
please call Customer Services
on 0800 731 1178 for assistance.



Vaporiser made in China
E-liquids made in Germany

Manufactured by Valeo Laboratories,
Germany +49 4832 9786000